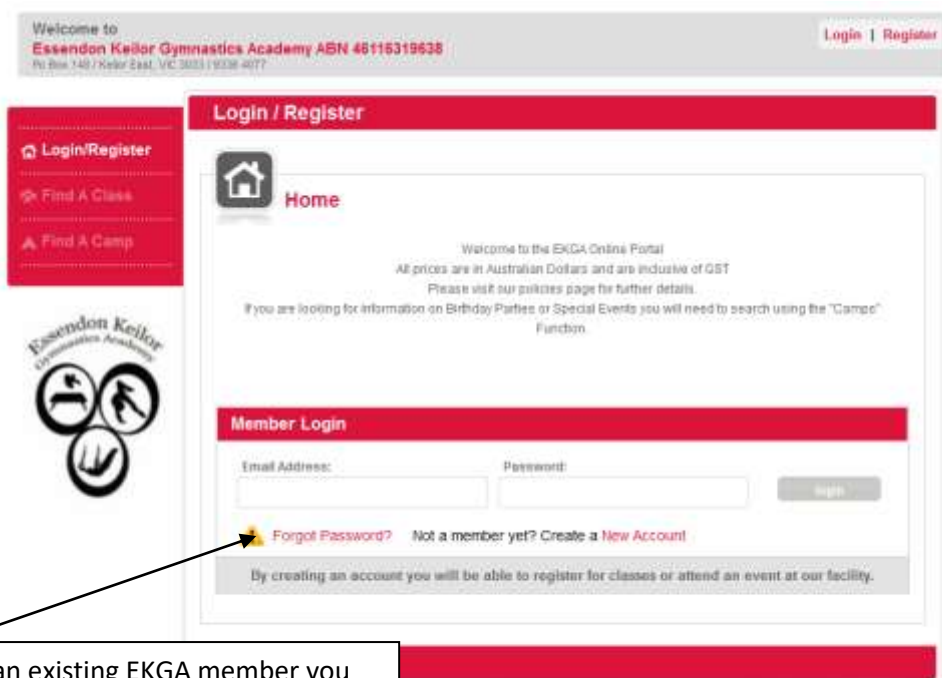
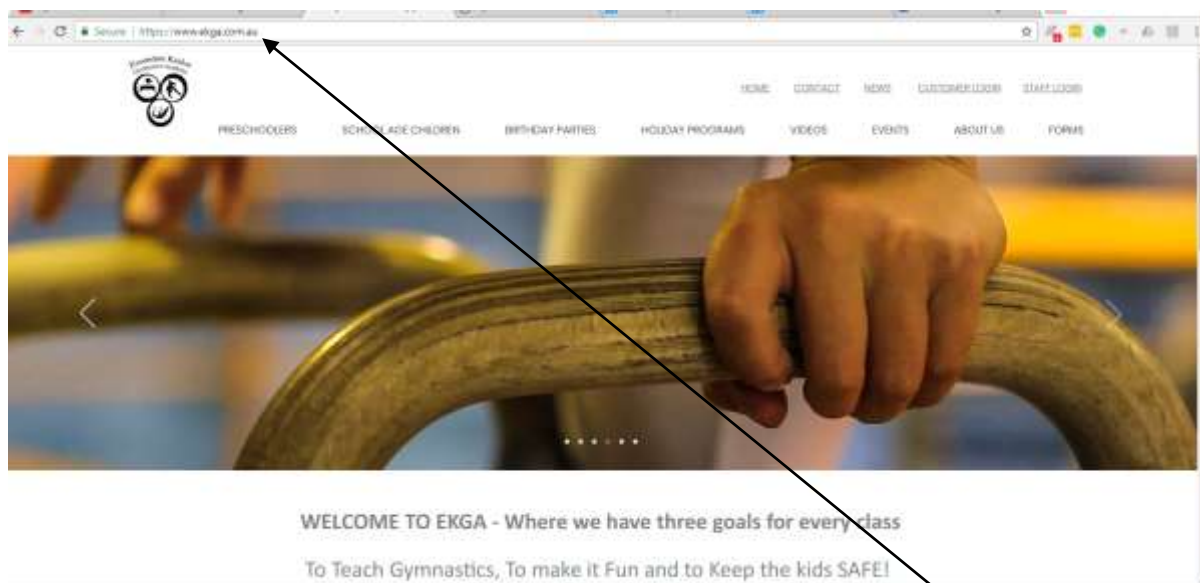




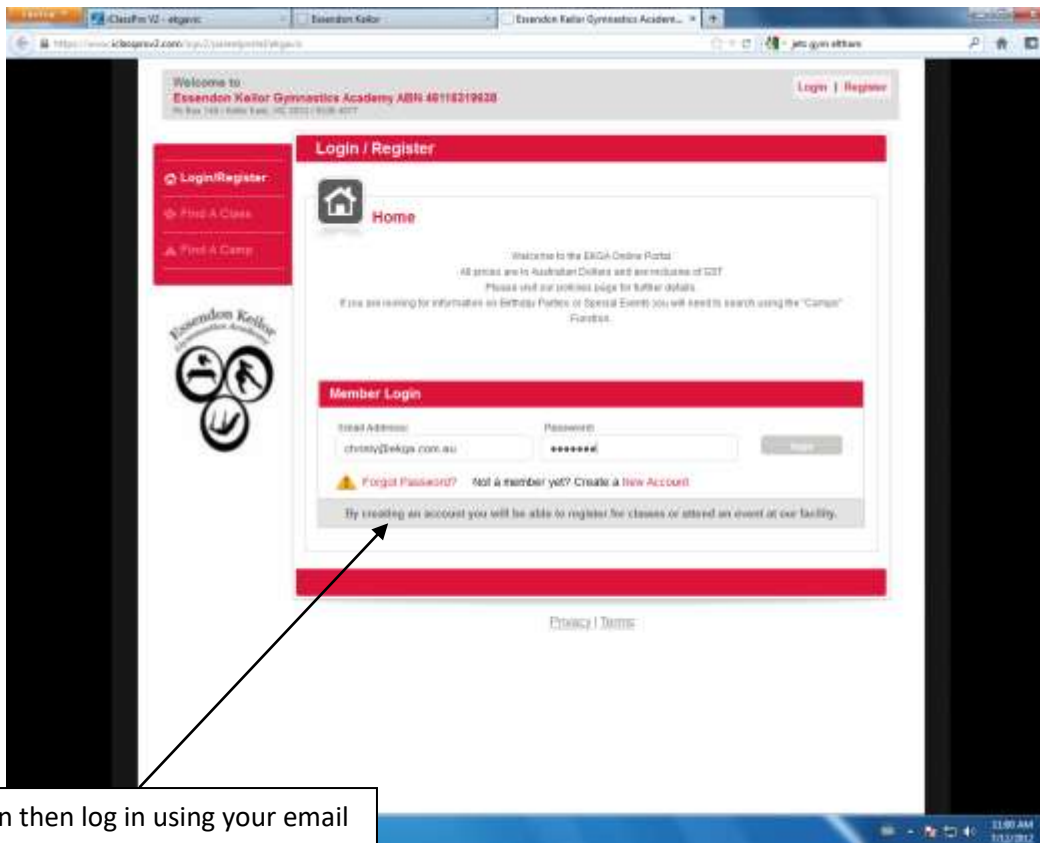
Accessing the EKGA parent Portal For Existing EKGA members



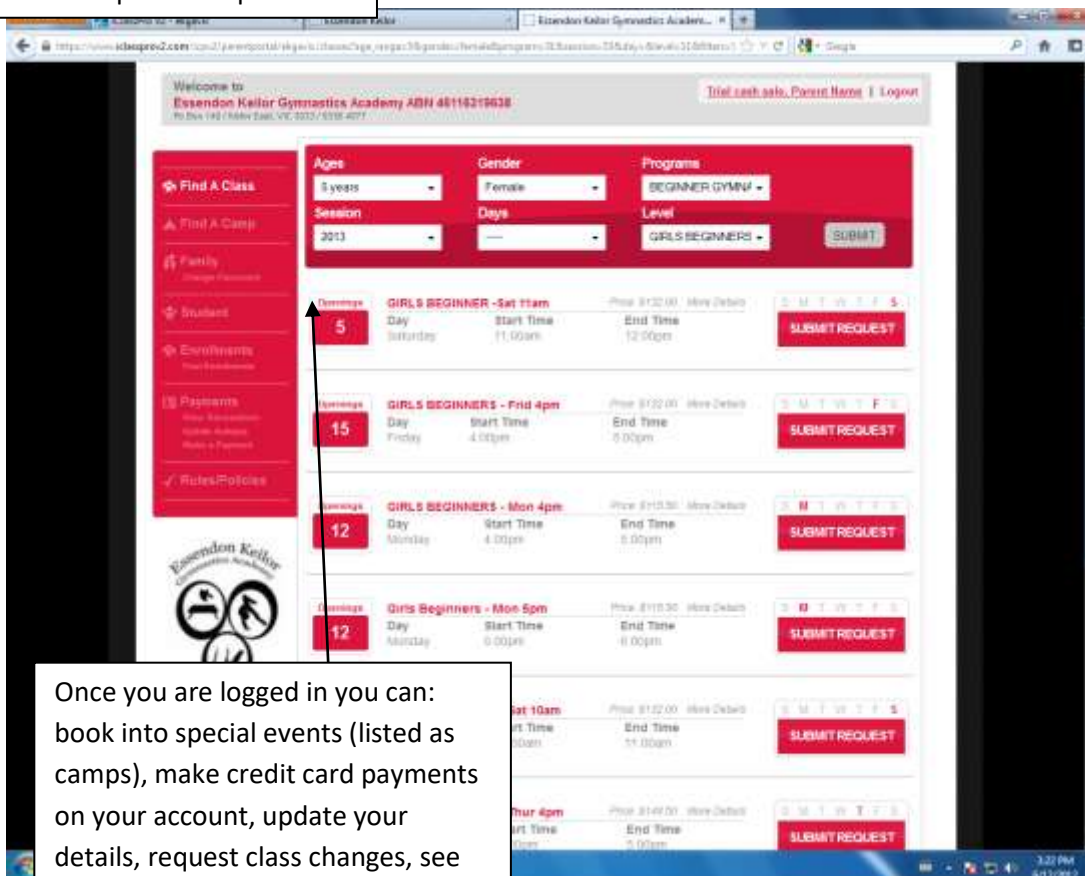
Start by visiting the website
www.ekga.com.au

Then click on the "Customer
Login" button

As an existing EKGA member you won't yet have a password, but you will have an account. Click on the "Forgot Password?" link and a password will be emailed to you within a minute or so.



You can then log in using your email address and the password provided.



Once you are logged in you can: book into special events (listed as camps), make credit card payments on your account, update your details, request class changes, see how many spaces are left in classes and events and much more!